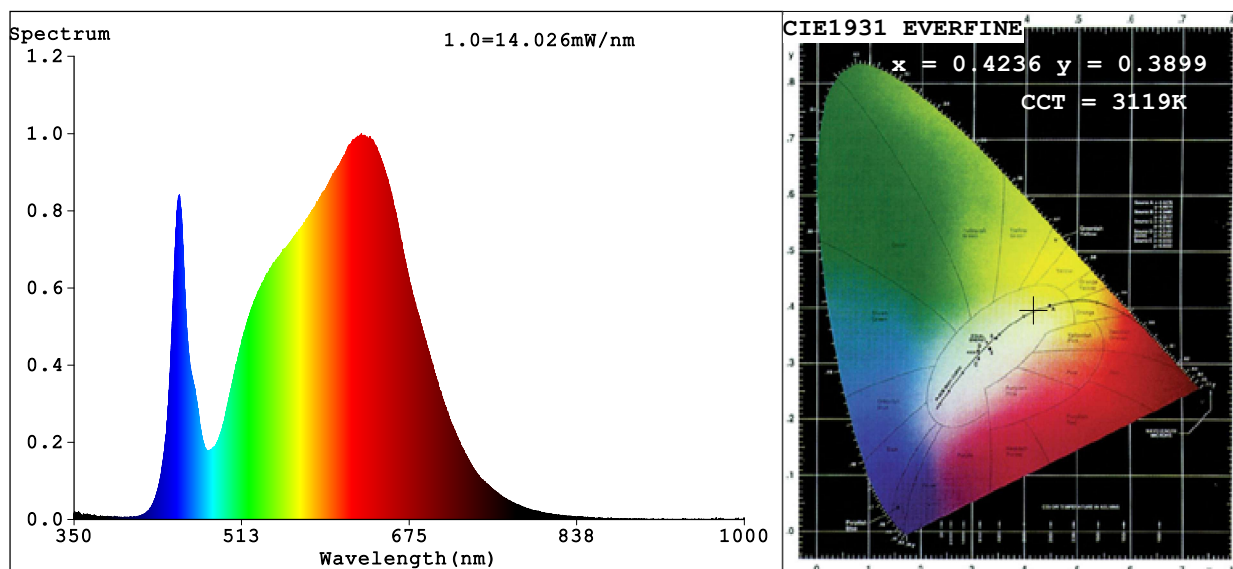


Spectrum Test Report



Color Parameters:

Chromaticity Coordinate: $x=0.4236$ $y=0.3899$ $u'=0.2480$ $v'=0.5137$

CCT=3119K (Duv=-0.0038) Dominant WL:Ld =583.9nm Purity=44.2%

Ratio:R=23.7% G=73.7% B=2.6%; Peak WL:Lp=628.6nm FWHM=170.6nm

Render Index:Ra=92.4 CRI=89.3 TM30:Rf=88 Rg=104

R1 =94 R2 =95 R3 =92 R4 =92 R5 =92 R6 =91 R7 =94

R8 =89 R9 =73 R10=85 R11=91 R12=73 R13=94 R14=95 R15=93

Photo Parameters:

Flux = 712.6 lm Eff. : 59.03 lm/W Fe = 2.573 W

Electrical parameters:

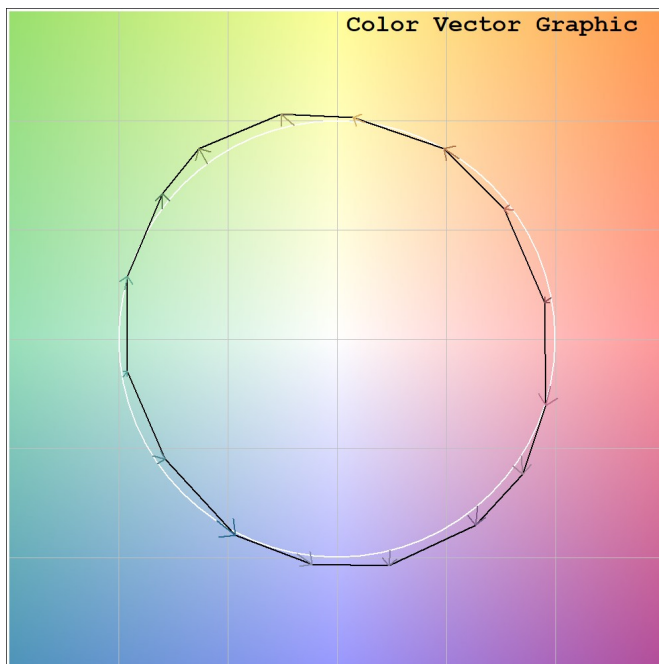
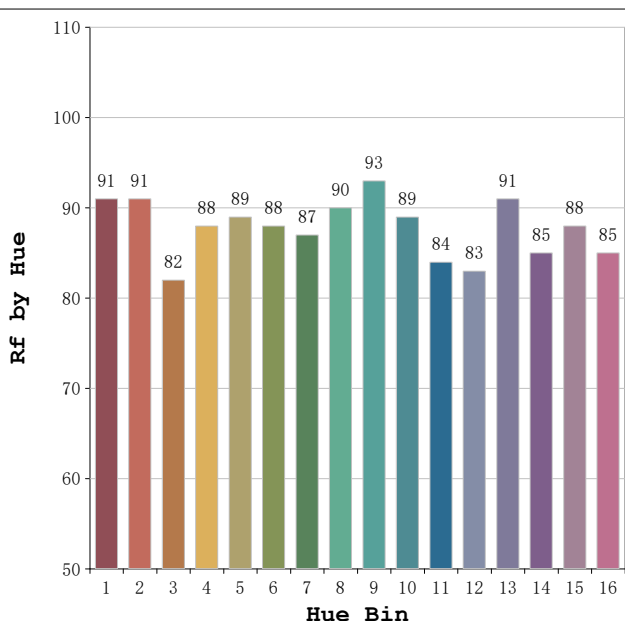
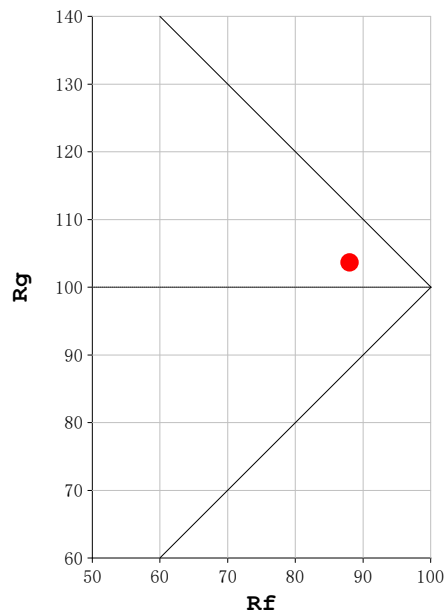
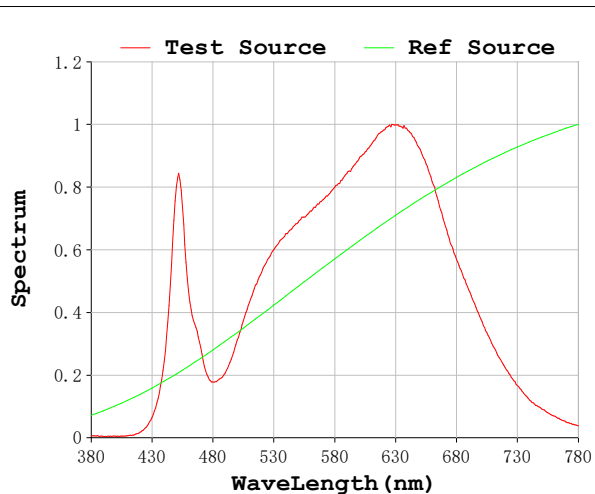
V = 23.998 V I = 0.5030 A P = 12.07 W PF = 1.000

Status: Integral T = 2000 ms Ip = 50537 (77%)

Model:Ecoled Neón Kenya 3000
Tester:Sergio Carneros
Temperature:20Deg
Manufacturer:Luz Negra

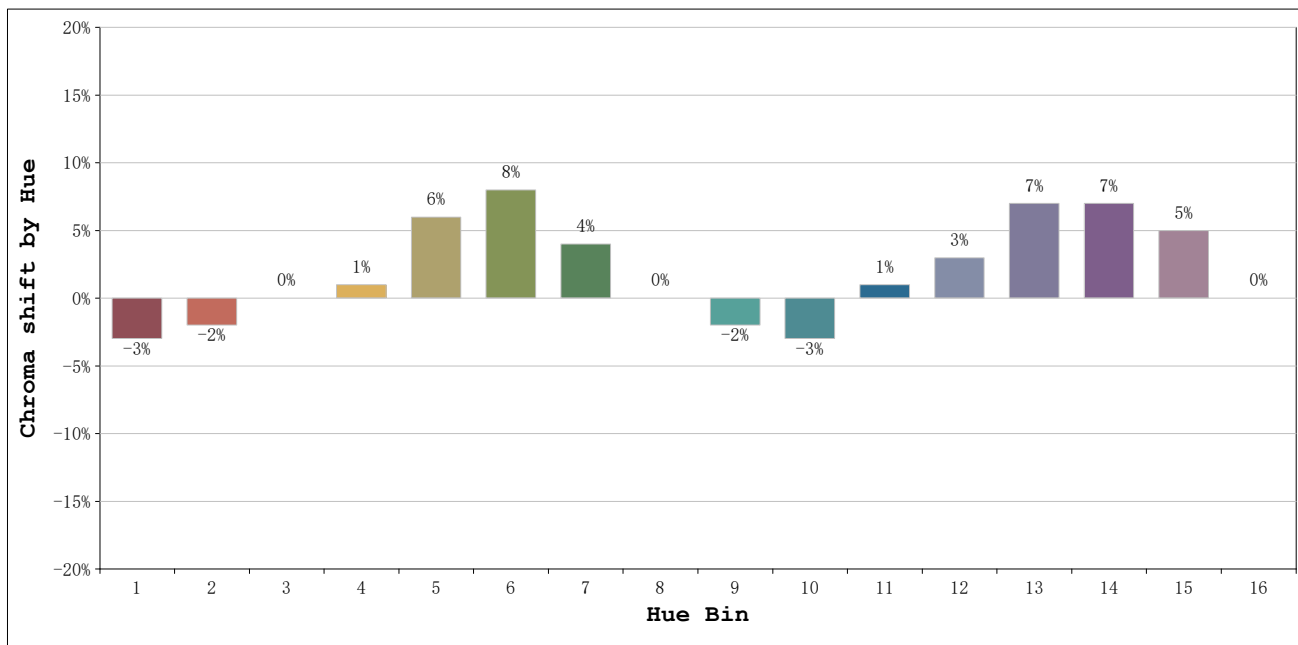
Number: 10.267
Date:2025-03-25 13:32:56
Humidity:50%
Remarks:100cm de de neón

Rf: 88 **CCT: 3119 K** **u': 0.2480**
Rg: 104 **Duv: -0.0038** **v': 0.5137**



Model:Ecoled Neón Kenya 3000
 Tester:Sergio Carneros
 Temperature:20Deg
 Manufacturer:Luz Negra

Number: 10.267
 Date:2025-03-25 13:32:56
 Humidity:50%
 Remarks:100cm de de neón



			Graphic shift(%)	
Hue Bin	Hue Angle	Rf	Chroma	Hue
1	0.0° - 22.5°	91	-3	0
2	22.5° - 45.0°	91	-2	3
3	45.0° - 67.5°	82	0	8
4	67.5° - 90.0°	88	1	6
5	90.0° - 112.5°	89	6	5
6	112.5° - 135.0°	88	8	0
7	135.0° - 157.5°	87	4	-5
8	157.5° - 180.0°	90	0	-5
9	180.0° - 202.5°	93	-2	-1
10	202.5° - 225.0°	89	-3	4
11	225.0° - 247.5°	84	1	11
12	247.5° - 270.0°	83	3	8
13	270.0° - 292.5°	91	7	-1
14	292.5° - 315.0°	85	7	-5
15	315.0° - 337.5°	88	5	-6
16	337.5° - 360.0°	85	0	-8

Model:Ecoled Neón Kenya 3000
 Tester:Sergio Carneros
 Temperature:20Deg
 Manufacturer:Luz Negra

Number: 10.267
 Date:2025-03-25 13:32:56
 Humidity:50%
 Remarks:100cm de de neón